

# Pioneer<sup>®</sup> ATHLETICS

ingredients matter.<sup>®</sup>

## GameLine<sup>®</sup>

GameLine is the perfect call when you need quality gloss paint that lasts one or two games and removes easily.

- Highly effective, industry proven removable synthetic turf painting system
- Ideal for short-term applications
- Removes easily with Blitz™ GameLine Remover Solution or Blitz™ HT
- Ideal for infilled turf systems
- Custom colors available

## SPECIFICATIONS

|                                      |   |
|--------------------------------------|---|
| For use on                           | Infilled polypropylene & polyethylene turf systems        |
| Coverage per gallon                  | 250 - 350 ft. x 4 in. (varies by speed and substrate)     |
| Ideal air temperature at application | 50° – 90° F   |
| Applied by                           | Airless striper set between 900-1000 psi                  |
| Recommended tip size                 | .317 or .319  |
| Dry time @ 70° F                     | Dry to touch in 1 hour. Completely dry in 48 - 72 hours.* |
| Removal                              | Blitz remover solution, agitation, and clean water        |

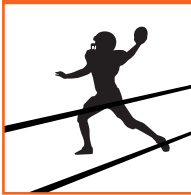
*\*High humidity & cool temperatures will result in longer dry times*

### GameLine System Process

#### 1. Paint.



#### 2. Play.

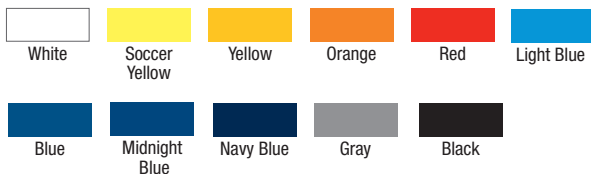


#### 3. Remove.



- Apply any of our Blitz GameLine remover solutions
- Agitate
- Rinse with water

### GameLine Removable Standard Colors:



CUSTOM COLORS AVAILABLE



Order today!

800-877-1500  
pioneerathletics.com