

Pioneer[®]
ATHLETICS

ingredients matter.

800.877.1500
PIONEERATHLETICS.COM

NATURAL TURF PAINTS & ACCESSORIES



Game Day & Game Day Quick Cure Colors



Game Day®

Our top-of-the-line field marking paint at an attainable price

- Mixed with a higher concentration of super premium pigment and optical brighteners than other natural grass marking paints
- Eye-pleasing optic whites and fan-stunning standard colors
- Consistent color intensity regardless of whether it's applied straight or diluted
- Adheres better to the tips of grass blades than competitors' products (better for grass health)
- Also available as Game Day Pre-Mix and Airless
- White dilutable up to 3:1; Colors dilutable up to 1:1
- Custom color matches available

Game Day® TKO

- Highly concentrated and dilutable super premium athletic field marking paint
- Extremely bright white provides long-lasting, brilliant lines and logos
- Available in white only
- Dilutable up to 5:1

Game Day® Quick Cure

- Specially designed to cure faster and not rewet
- A great alternative for locations with regular high humidity or seasonal cool temps and moisture
- The super-premium quality you expect from Pioneer's Game Day paint
- Utilized by professional sports teams, universities, high-profile games, as well as numerous high schools and parks departments
- 50/50 dilution (1 part water, 1 part paint) provides best results
- Works best in fall, winter, and spring sports seasons
- Mixed with a high concentration of super premium pigment and optical brighteners
- Adheres better to the tips of grass blades than the competitors' products (better for grass health)
- Available in standard and custom Game Day Colors

"With weather and temperatures being so unpredictable late in the fall, having the ability to paint our fields with Quick Cure any day of the week and still look like we painted the day before our game has been a game changer! It dries in a very reasonable time when temperatures are around the freezing mark and we are no longer worried about it re-wetting in the morning dew or during a rain event"

Brian Bornino, CSFM | Sports Field Manager, Purdue University





A Brite Stripe® Airless

- Designed exclusively for airless striper applications
- Optimized viscosity for spraying through airless machines without diluting
- White contains a slight blue tint for whiter, brighter lines
- Ready-to-use. Further dilution not necessary

Available in standard and custom colors

B Brite Stripe® Pre-Mix

- Viscosity optimized for spraying
- Designed to adhere to grass blade better than paint simply diluted 50/50
- Saves time so you can get to work faster
- Ready-to-use. Further dilution not necessary
- The same great features you expect from Brite Stripe, but already pre-diluted.

Available in standard and custom colors

C MAX™

- A dense and rich formula with great brighteners for closeup-ready results.
- Exclusive white blend containing 150% more prime hiding pigments
- Available in white only
- An affordable premium paint
- Dilutable up to 4:1

Brite Stripe® Chalk

- A very temporary marking paint for natural grass
- Perfect for short-term special events, camps, drills or instances when a quick field turn around is needed
- Removes with water, rain, or over time with normal wear

Available in all standard and custom Brite Stripe colors

Brite Stripe® Temporary

- A temporary marking paint for natural grass
- More durable than chalk but less than other field marking paints
- Perfect for special events or games
- New formula

Available in all standard and custom Brite Stripe colors



Brite Stripe®

Brite Stripe is the number one choice at the pro, collegiate, high school, and recreational levels throughout North America.

- The go-to premium paint for those who expect a long-lasting performance and bright field markings
- Vivid colors that are bright and durable, even when diluted
- No harm to grass or its growth
- Dilutable up to 3:1
- A dependable choice for both practice fields and game fields.
- Available in 21 standard colors, metallics, fluorescents, and custom colors

Brite Stripe® Colors: Custom colors available.



3 NATURAL TURF FIELD MARKING PAINT



The World's First Line of VOC-Free, Safer Choice Certified White Field Marking Paints

Ultra-Friendly proves that the grass can be greener. They are the turf industry's first VOC-free paints, and our UF white paints are the only to receive EPA recognition. Ultra-Friendly's "Safer Choice" rating comes as the result of a pioneering partnership with the Environmental Protection Agency to formulate products with environmentally preferable chemistry. It's a dedication you'll appreciate on the field and off.

"Just like the name says, Brite Stripe UF produces extra bright lines. It stands up to play, making it very durable, all while being environmentally friendly and easy to use. I highly recommend it."

Ted Hartman / Okemos Schools

"We have been using Brite Stripe Ultra-Friendly since it first came out. We are very pleased with the brightness and durability of the painted lines. Plus, no VOCs has been great for our turf!"

Peter Thibeault, CSFM / Noble and Greenhough School / Dedham, MA



StarLine™

VOC-free field marking paint designed for the StarLiner™ electric field striping machine.

- The StarLine Ultra-Friendly field lining system is the easy, affordable, green way to produce crisp, bright lines
- StarLine paint comes in a 2-1/2 gallon, resealable and recyclable container
- Colors: White, Yellow, Pink, Orange, Red, Blue, and Black
- See StarLiner on pg. 5



Brite Stripe® Ultra-Friendly

The same great performance as you've come to expect from Brite Stripe but VOC-free.

- Ultra-Friendly to the environment and durable
- Dilutable up to 3:1
- Also available in Airless & Pre-Mix
- Colors: White, Yellow, Orange, Red, Blue, and Black



StarLine GPS

Starline GPS Ultra-Friendly has been specially designed to produce crisp, long-lasting, and bright lines with the TinyLineMarker robot

- Features VOC-Free and environmentally preferable chemistry
- Five gallons per unit! StarLine GPS paint is sold in boxes with two, 2-1/2 gallon, resealable and recyclable containers
- A ready-to-use paint, no need to dilute.
- Available in brilliant white and vivid hues of red, blue, yellow, orange
- Works great with other robot strippers too!



Game Day® Ultra-Friendly

Game Day gives your field premium performance at an attainable price.

- Recognized by the U.S. EPA for it's VOC-free and safer chemistry
- Mixed with a higher concentration of premium pigment and optical brighteners than other natural grass marking paints
- Dilutable up to 3:1
- Also available in Airless and Pre-Mix
- Only available in white



MAX™ Chalk Colors:



MAX™ Chalk

- Temporary marker for natural grass
- Jumbo size can that's perfect for creating temporary field markings for camps and drills or other temporary marking, even on concrete
- Can be sprayed with a Game Day Aerosol Striping Machine, Marking Stick, Pistol, or by hand



Robot Paints

- Paints designed specifically for use with robotic paint strippers on natural grass
- Each paint produces crisp, long-lasting and bright lines
- 2 jugs per box
- Available in white, black, red, blue, yellow, and orange

StarLine GPS

Created for the robotic strippers, this ready-to-use, 2.5 gal. VOC-Free paint uses environmentally preferable chemistry.

Sport GPS

Designed for the TinyLineMarker Sport, this highly concentrated .33 gal. concentrate makes 1.3 gallons (5 L) of paint after water is added to the jug.

RoboStripe

Certified for use in the Turf Tank One Robot, each jug contains 2.5 gallons of concentrate that is dilutable up to 3:1.

PVIP™

The versatile aerosol paint in a jumbo size can outfitted with value, performance, brightness and paint crew satisfaction.

- Save time and money, plus get 22% more paint than our standard size can
- Durable arctic white color pops on your field on game days
- All without clogs, waste and mess

PVIP available in Arctic White only.

Game Day Aerosol

Experience the newest and most vivid aerosol colors in the field marking paint industry!

- The same super premium quality that you expect from all Game Day paints
- Game Day aerosol colors match our Game Day bulk standard colors
- Our jumbo size can contains 22% more paint per can than regular size aerosols
- Game Day aerosol is formulated with premium pigments for exceptional coverage and hiding

Available in 21 high-performance colors.

Game Day and Quik Stripe® Colors:



Quik Stripe®

Count on Quik Stripe, the industry-leading aerosol marking paint in a standard size can.

- So ready-to-use, and quick drying, it's built right into the name
- The best in brightener technology with no clogs, waste or mess
- Crisp, clear lines even in severe weather

Available in 15 high-performance colors.

5 FIELD MARKING MACHINES

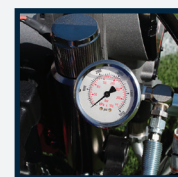
Brite Striper 3500 SP Brite Striper 3500

- Affordable, rear-gun mount airless striper
- Smooth ride -- even on rough fields -- thanks to the sturdy, lightweight frame with large pneumatic tires!
- Easy-reach handlebar with mounted controls
- Steady, adjustable electronic pressure control (0-3300 psi)
- Front swivel wheel is great for painting arcs and circles
- Warranty-backed, premium-grade Briggs & Stratton Vanguard engine
- Dependable pro-duty airless pump
- Adjustable left or right spray configuration for your convenience
- Quick system flush makes cleanup faster and easier
- Logo & wide area spraying made easier with a 50' hose.
- Two models available to fit your needs -- Brite Striper 3500 SP for self-propelled striping or the Brite Striper 3500 push-style airless striper

BS3500SP; BS3500



BRITE STRIPER 3500^{SP} SELF-PROPELLED



StarLiner™

- Easy-to-use field liner with a long-lasting, rechargeable battery
- "Plug & Stripe" technology - simply plug the custom, self-sealing container into StarLiner and stripe with ease
- Convenience of an aerosol striper with the premium look of Pioneer's Ultra-Friendly paints
- Optional 6' spray wand attachment
- Handle folds for transportation
- Telescoping spray arm
- Comes with four spray tips
- Quick-disconnect paint line

STAR



Brite Striper® 7000

- The Brite Striper 7000 is a ride-on airless paint striping machine
- Front wheel drive with rear steering
- Fully adjustable, 0-3000 PSI
- Floating spray gun for maintaining line width over rough terrain
- On-board 2.5 gallon purge tank
- In-line filter keeps you running without clogs
- A 14 hp Subaru-Robin OHC engine with electric start
- 50 gallon poly tank: stripe up to four football fields or seven full-size soccer fields with one filling
- 36 month warranty

BS7000



Brite Striper® 2000

Self-propelled, hydraulic-driven bliss.

With the 2000 you get self-propelled forward and reverse without slippage or pushing.

- Honda GX120 Engine
- 12-gallon stainless steel tank
- Variable speed, hydraulic drive, self-propelled drive system with reverse
- 4-position handle
- 24" wand with 12' hand hose
- Semi-pneumatic wheels to guide over rough terrain
- Optional 2-headed sprayer

BS2000HPC



Quik Stripe Aerosol Striper

- Works with paints in our standard size aerosol can
- Large, 10" semi-pneumatic wheels and wide axles provide a smooth roll

QSM

Use with:



Premium Aerosol Striper

- 8" pneumatic wheels roll smoothly over rough fields and provide crisp striping
- Works with paints in our jumbo size aerosol can

PVIPPM

Use with:



Game Day® Aerosol Striper

- Works with paints in our jumbo size aerosol can
- Large, 10" semi-pneumatic wheels and wide axles provide a smooth roll

MVPM1

Use with:

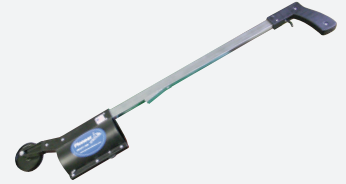


Premium 2-Can Aerosol Striper

- Cover both sides of the grass blades in a single pass
- Features pneumatic wheels and is designed for our jumbo size cans

MVPM2

Use with:



Aerosol Marking Stick

- New design for increased durability and usability
- Available for both standard & jumbo size cans
- Longer and easier than ever before with a ergonomic grip and responsive finger-tip trigger
- Comfortable, free-hand marking
- Gets you closer to stencils
- Enjoy lightweight, sturdy construction

GAME DAY, PVIP & GAMELINE - PSTICK
QUIK STRIKE - QSTICK



Aerosol Marking Pistol

- New design for increased durability and usability
- Available for both standard & jumbo size cans
- Comfortable, free-hand marking
- Gets you closer to stencils

GAME DAY, PVIP & GAMELINE - PVIPMP
QUIK STRIKE - QSMPP



See our full line of airless, low pressure, & aerosol strippers on PioneerAthletics.com

7 STENCILS



Custom Stencils

We offer the latest in stencil technology to go above and beyond your world-class expectations

- Easily turn your custom art or lettering into an on-field graphic
- Cutout and tracing pattern options available
- One-piece and multi-piece versions offered
- Variety of materials available, including: 4 mil Polyethylene, 6 mil Polyethylene, 10 mil Mylar, 60 mil Dura Tuff, 100 mil Maxi Tuff, and 12 gauge aluminum

Aluminum Corner Arc Stencil

- Sturdy 12 gauge aluminum stencil
- Single piece includes stencil for corner arc and centerline circle
- 36" soccer corner arcs with a 4" line
- 9" diameter centerline circle

CAPKS



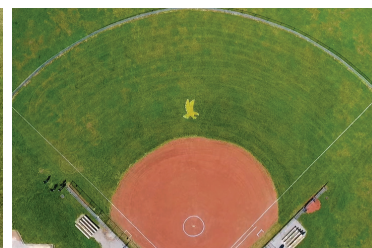
Tracing Pattern Stencils

- Half-moon cutouts allow you to dot out your logo
- Remove the stencil and connect the straight edges to form your outline
- Fill in the space in-between the outlines (if desired) and suddenly you have a great looking, custom graphic on your field
- Made of durable, reusable, semi-clear polyethylene plastic
- Learn more about how to use a tracing pattern stencil at PioneerAthletics.com/TPS



Custom Outfield Stencil

- Celebrate your team, special game, or tournament with a custom stencil
- We'll turn your artwork into a stencil so you can paint your logo in the outfield or behind homeplate!
- Available in one-piece tracing pattern or Dura stencil
- Made to your sizing specifications
- Multiple material options available
- Can be used with aerosol or bulk paint



Ribbon Stencil

- Three piece ribbon stencil to promote awareness for your cause
- 6'x10' stencil made from 1/16" thick polyethylene
- Just add the coordinating paint color for your cause and your field is ready!



Infield Logo Stencil

- Ideal for home plate area, behind pitcher's mound, and on the infield skin area
- Can be used with conditioner or aerosol paint

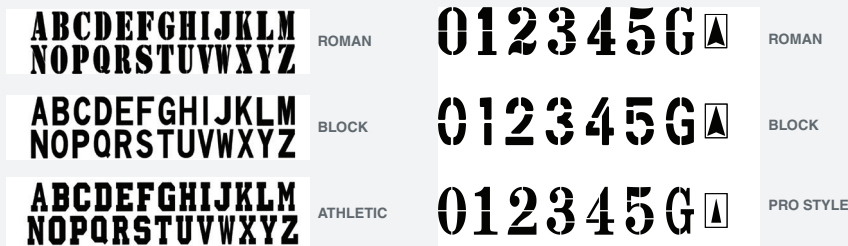


Letter & Number Stencil Kit

- Three fonts available

Letter Kit: 8 standard sizes up to 30' tall

Number Kit: Includes 0-5, G, & arrow; 3' and 6' tall options



Aluminum Hash Mark Stencil

- Sturdy, 2-piece, slide-together construction with locking pins helps make accurate and crisp lines
- 15' total length with folding handles for easy storage
- Lightweight, all aluminum construction
- Wheel kit can be added to make it a one person operation
- Foam edges can be added to help prevent paint run-off

AHS



Aluminum Number Stencil Kit

- Kit includes 0 (x2), 1, 2, 3, 4, 5 and arrow
- Large numbers are 48" wide x 72" tall
- 6" handles on each corner
- Roman style font, custom fonts also available
- Made of durable 1/8" aluminum
- Can be stored vertically or horizontally
- Easy cleanup after every use with a hose or pressure washer
- Forget the measuring tape... Offsets built in for quick alignment of numbers

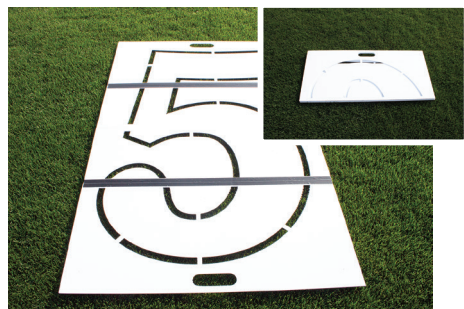
ANS



EZ Fold Number Stencil Kit

- Made of lightweight, durable and waterproof corrugated plastic
- Each stencil folds easily and has a handle for carrying
- Set includes 0-5 and direction arrow. Goal line "G" optional
- Full set weighs only 25 pounds and fits into a compact box, measuring 6"x22"x48"

EZNUM



Hash Mark Stencil Kit

- Kit includes four 1-yard hash marks in 1-piece or 2-piece hinged stencils.

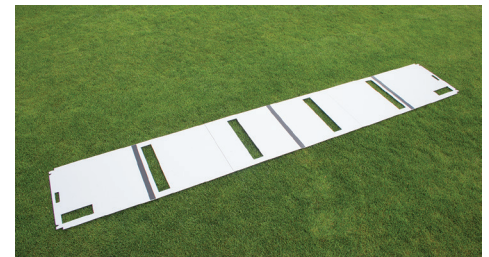
1-PIECE - SF6070D, 2-PIECE - S6070D



EZ Fold Hash Mark Guide

- Five yard long, folding, corrugated plastic stencil
- Features edge cut notches for easy and accurate placement
- Lightweight unit has a handle for carrying

EZHASH



Aluminum Baseball Stencils

- Made from durable .08" aluminum
- Used to freshen up your pitching rubber or home plate with aerosol field paint
- Simply line the stencil up with the rubber or home plate and apply paint
- No need to worry about overspray on your infield dirt or grass
- Easy cleanup after use with a hose or pressure washer

Home Plate Stencil: HPS

Pitching Rubber Stencil: PRS



9 PAINT ACCESSORIES

Paint Tote Containment & Mixing System

- Perfect for facilities with multiple fields and large paint use
 - Allows you to eliminate many 5 gal. pails by utilizing Pioneer's paint totes
 - Includes tote mixer (2 for two tote system) and spill containment system
 - Single phase, 1/2 HP, TEFC tote mixer with 38" stainless steel shaft and 5" mixed flow impeller
 - Containment system made of heavy-gauge steel for durability
 - Offers high-load capacity with removable grating deck and drain for easy cleaning
 - Included pail holder attaches to unit
 - One Tote System: 76"L x 51"W x 29"H; total height from floor to top of mixer: 89"
 - Two Tote System: 99"L x 51"W x 23"H; total height from floor to top of mixer: 83"
- One Tote System: TOTE1**
Two Tote System: TOTE2
Mixing Blade only: TOTEM



One Tote System



Two Tote System



Tote Mixing Blade

All Pioneer paints are available in totes

Paint Mixing System

- Large, 55-gallon capacity tank with 110-volt motor cuts your prep time so you can give more attention to your field
- Fiberglass tank and lid with easy flow gate valve
- Heavy-duty, stainless steel stand allows for dispensing into 5-gallon pails
- 1/2 HP mixing motor features ground electrical cord with switch
- Die cast aluminum mixing blades and stainless-steel shaft and coupling

MIX55



AeroVent® Aerosol Can Recycling Systems

- Simultaneously punctures and drains aerosol cans
- Quickly & easily installed onto a standard 55-gallon drum
- Activated carbon filter captures escaping vapors
- Available as AeroVent® 3X (3 can unit), AeroVent® 1X (1 can unit), AeroVent Standard (budget 1 can unit)
- Standard unit uses Safe2Filter™ system
- 1X and 3X units use Safe2Vent™ filters with Viz-a-Ball™ check indicator
- Filters comply with EPA, OSHA & CA regulations

Standard: AEROS; 1X - AERO1X; 3X - AERO3X
Safe2Vent Filters: 10004702 (single), 10004703 (2 pack)
Safe2Filter: 10004841 (single), 10004898 (2 pack)



PLeeFix™ & iPro Markers

- Athlete friendly & UV-resistant synthetic turf tufts
- Fibers available in yellow, blue, red, orange, white, and green
- Recycled polypropylene spiral cone base
- Use to mark sprinkler heads and other potential field hazards
- Eliminates the need to re-measure natural grass fields prior to painting
- Highly visible and mower resistant

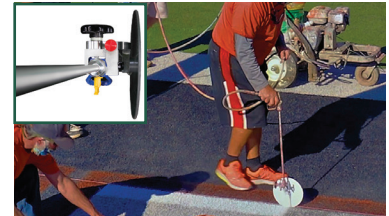
Orange - PFO25; White - PFW25;
Blue - PFB25; Yellow - PFY25;
Red - PFR25; Green - PFG25;
Mixed Box - PFM25



Marksmart™ System

- Eliminates the need for repeated field measuring and staking
- Sockets permanently locate and identify line intersections
- Simply insert pegs into sockets and attach string
- Follow string lines to paint field
- Available systems: basic, football, intramural and soccer
- Individual components also available

FOOTBALL - MSFOOT; SOCCER - MSSOCCER;
BASIC - MSBASIC; INTRAMURAL - MSINT



The DISC Spray Shield

- Rolling spray shield for wand applicators
 - Helps create razor sharp edge lines
 - Disc shield rolls along turf surface as you paint
 - Attaches to most airless tips
 - Available as one disc or two-disc setup
- Single Disc - TRAC; Double Disc - TRAC2



EZ Stringer (Power String Winder)

- Durable solid aluminum spool and steel rod backbone
- Ergonomic design maximizes productivity by minimizing operator fatigue and discomfort
- Handle on spool for fast field layout
- Includes: 1 Easy-Stringer, 1 Pair of Gloves, 1 Drill Attachment, & 1000 or 3000 feet of string pre-spoiled

EZWINDER, EZWINDER3



Line Mate

- Field layout system includes windup reel, cable, hammer, and 2 stakes
- 1/6" vinyl-coated cable
- Sport specific systems available for Football, Football with ring at 160', Soccer, Women's Lacrosse, Men's Lacrosse, Field Hockey
- Permanent distance markings on cable



Basic Cord & Reel

- Easy-to-use guide for the layout process
- Utilizing the kit will cut your layout time significantly
- Kit comes with stakes and hammer
- Available with 500' or 1200' of cord
- Cord and reel lining stakes also available separately

Cord & Reel-LM500, LM1200
Stakes only-CH-M110



400' Measuring Tape

- Heavy-duty polyethylene case
- Easy-turn rewind system
- PVC coated fiberglass, double-sided tape shows feet and meters
- Other sizes available

CH-R400



330' Measuring Tape

- 330' durable nylon-coated steel
 - Sturdy construction & fiberglass case
- MT330S



Heavy Duty Lining String

- 1/8" hollow braid monofilament polyethylene string
 - Rugged and durable
 - Available in 500 ft. and 1,200 ft. lengths
- LM500C, LM1200C



Basic Lining String

- 1,100 ft. of #18 premium twisted nylon twine
 - Lightweight, but strong
 - Available in white, yellow and pink
- White-TWINE; Yellow-TWINEY; Pink-TWINEP

CHOOSING YOUR PRODUCT

Bulk Paints

Pioneer Athletics offers several different bulk natural grass paints to fit your budget. Additionally, Pioneer's bulk grass paint brands each differ in their maximum dilution rates, allowing some paints to be diluted back further than others. For some customers, paints with greater dilution rates allow them to take a step up to a more premium paint. Another benefit of bulk paints is that in addition to a large pallet of standard colors, bulk paints can be ordered as any custom color. This gives you the ability to have logos with your school's or organization's exact colors.

Things to keep in mind with bulk grass paints... First, you need to make an investment into striping equipment. With machines you need to factor in maintenance, time to load the paint and clean up time. Another consideration to keep in mind is that bulk paint often needs to be mixed or diluted prior to using it. These factors need to be kept in mind because they affect the time and staffing needed.

Aerosol Paints

Aerosol cans work well in situations with limited staffing and time. Additionally, the prep work that goes into aerosol is pretty simple – shaking the can prior to use. Aerosol paints have a smaller startup cost compared to bulk paints because the machines are less expensive. An advantage of aerosol is that it can be used when inclement weather is forecasted due to how quickly it dries. If you are a bulk paint user, having a few cases of aerosol on hand can help get you through those bad weather games. Although we offer many standard aerosol colors, custom colors are not an option.

	Paint	Concentrate	Pre-Diluted	Max Dilution	Ready-to-use	Eco-Friendly	Removable	Standard Colors	Custom Colors
Super Premium	Game Day	*		3:1 (white); 1:1 (colors)				*	*
	Game Day Pre-Mix		*		*			*	*
	Game Day Airless		*		*			*	*
	Game Day Quick Cure	*			*			*	*
	Game Day TKO	*		5:1					
Ultra-Friendly	Game Day UF	*		3:1		*			
	Game Day UF Pre-Mix		*		*	*			
	Game Day UF Airless		*		*	*			
	StarLine		*		*	*		*	
	Brite Stripe UF	*		3:1		*		*	
Premium	MAX	*		4:1					
	Brite Stripe	*		3:1 (white)				*	*
	Brite Stripe Pre-Mix		*		*			*	*
	Brite Stripe Airless		*		*			*	*
	Brite Stripe Temporary	*		1:1	*		*	*	*
	Brite Stripe Chalk	*			*		*	*	*
Robot Paint	StarLine GPS		*		*	*		*	
	Sport GPS	*						*	
	RoboStripe	*		3:1				*	
Aerosol	Game Day Aerosol				*			*	
	Quik Stripe				*			*	
	PVIP				*				
	MAX Aerosol Chalk				*		*	*	

Pioneer
ATHLETICS

ingredients matter.

800.877.1500
PIONEERATHLETICS.COM